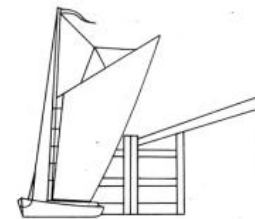


# Quagmire

The Spring 2019 newsletter of  
**The North Walsham & Dilham Canal Trust**  
Registered Charitable Incorporated Organisation No 1180474

Working to secure Norfolk's Canal Heritage



[www.nwdct.org](http://www.nwdct.org)

[Membership@nwdct.org](mailto:Membership@nwdct.org)

[Workparty@nwdct.org](mailto:Workparty@nwdct.org)

[Secretary@nwdct.org](mailto:Secretary@nwdct.org)

## News...

### **Stop Press!** Exciting news - at last we can start the **restoration of Ebridge Lock!**

The Trust is delighted to announce that we've been granted £26,000 of EU LEADER funding which will pay for the manufacture of the lock gates and stop planks. It is the Trust's first full restoration project and we can't wait to get started on it this summer.

The water in the millpond is held back only by a wall of cement bags placed at the top of the lock some 60 years ago. This grant will lead to the replacement of the bag wall with new gates, which will sustain the present level of water for people and nature, as well as being a visual reminder of the past. This will also be the first stage in the restoration of the second lock on the canal.

We know hundreds of people enjoy using the canal and its pathways around Ebridge and many of you will have seen what can be achieved, with the fantastic restoration job the canal owner and friends have carried out at Bacton Wood Lock one mile upstream.

**We will need to raise a further £9,000** for the Ebridge Lock restoration, to pay for items such as materials, equipment hire and some specialist contractors. If you can spare anything to help us restore this fantastic piece of Norfolk's proud industrial heritage, please visit the donations page on our website: [www.nwdct.org](http://www.nwdct.org)



*Thanks to Ivan for these two photos taken during work-parties at Ebridge Lock in 2005 and 2006. We are looking forward to continuing our photographic record now that real progress is possible.*

In the last edition of Quagmire, we welcomed Suki Pryce as a volunteer plant surveyor. Suki has since volunteered to take on the role of **Wildlife Officer** and all Trustees supported her appointment. Perry's shoes will be hard to fill but Suki has the necessary knowledge, experience and enthusiasm to continue where Perry had to leave the role owing to ill health.

Suki organised the original baseline wildlife survey of the area and will co-ordinate the development of our **Environmental Management Plan**. The first step has been made by developing an aquatic plant cutting program based on that used by the Broads Authority and adjusted to suit our specific needs.

Suki has clearly not been idle and has already recruited two new Wildlife Volunteers who will be working with her.



**Michael Cole** is a Graduate in Wildlife Conservation and Animal Behavior from the University of Wolverhampton, and lives in Dilham. He hopes that volunteering on the Canal will help him towards finding a job in his field in due course. Meanwhile, we're very grateful to have him, and he's already made his mark by stealth-canoeing along the Ebridge Lock section of the Canal, looking for signs of inhabitants - which he has indeed found, seeing Water Vole and Otter prints towards Tonnage Bridge, plus Kingfisher and Green Woodpecker. We look forward to making full use of his expertise while he is still available.



**Angie Davison** of North Walsham has a Degree in Biology, and is now Head of Science at Stalham High School. She joins us with her seven-year-old son **Noah**, who is keen to help survey along the Canal too. We're grateful that both have volunteered to have a go at surveying *aquatic invertebrates* in the Canal, as Ivan is keen for us to acquire some data about the bottom of the food chain that lives in the bottom of the

Canal. As an added bonus, Angie and Noah have a microscope at home and know how to use it. Angie is hoping to involve some of her students in projects based around the Canal, and to use school equipment as well – e.g. for testing water quality.



### Can you help?

The Trust is looking for an **Events Co-ordinator**.

We are looking for an organised person who is able to co-ordinate the team and our Trust events. Our main annual event is our 'Information & Open' weekend, which will be held this July at Ebridge Lock.

*You will not be working on your own as together we keep in touch via email bandying different ideas to ensure our event is successful, we just need someone to co-ordinate us all.*

It's preferred but not essential that you are able to attend Trustee meetings to report back the Events plans. Our meetings are held once a quarter at the Quakers Meeting House, Mundesley Rd, North Walsham at 2pm on a Tuesday. More information is available via the email address below.

For the 2019 events, see **Dates for Your Diary** at the end of this newsletter, or visit our website for an idea as to what we have planned at [www.nwdct.org/events.html](http://www.nwdct.org/events.html)

If you wish to discuss this role further or require any more information please get in touch via email at [secretary@nwdct.org](mailto:secretary@nwdct.org)



## Recent Events

February and March seemed to be popular amongst diverse clubs, societies and interest groups across Norfolk.

On **February 20<sup>th</sup>**, David Revill spoke to the Norfolk Forestry Group at Easton College. The organiser requested no films or slides but David's talk was obviously a success as he was presented with a cheque for £50 at the end of the evening. David's wife, Gisela ran a sales table and took an impressive £31.

On **February 21<sup>st</sup>**, Chris and Mary Black gave a Power Point presentation to the Brooke Thursday Club. Those present were clearly enthusiastic and they were besieged with questions afterwards. There was a sales table but we really needed Gisela with us, as we were unable to man the table but found £8 waiting there for us. The club gave £40 in appreciation.

Ivan's three talks to local organisations during **February** (27<sup>th</sup>) and **March** (1<sup>st</sup> and 20<sup>th</sup>) were again enthusiastically received, with two clubs surprised by the large turnout of interested people. The community near and far are keen to follow the Canal's restoration. Wells Ladies Probus Club donated £30, the North Norfolk Model Engineering Club, who had asked for an "Update" talk, £40, and the Neatishead, Irstead and Barton Turf Community Heritage Group £40. Without the selling expertise of Gisela, sales only amounted to £57. This does suggest that an extra body to support the speaker, at the sales table, does help considerably.

--oOo--

On **5th April 2019** Trust volunteers took part in a really interesting and informative Certified First Aid training day. The training was provided by VTS Event Medical Services and The Lead trainer Andy Segon (who went on many canal trips with Ivan Cane - Trust Chair some years ago) added some additional elements specific to the needs of those working on and by the Canal. We covered the essential requirements for breathing, bleeding, burns and breaks etc. Andy also added information about responding to shock and drowning, following cold water immersion, Weil's and Lyme Disease and blue-green algae. Resuscitation of children as well as adults was practised and the difference between heart attack and cardiac arrest was made clear by Faye Nelthorpe - the clinical tutor.

As a Trust policy we will not carry in our First Aid kits for public use - any creams or medications - not even a 'harmless paracetamol-type!' tablet. If more than this is needed we will advise them to seek expert help. Some volunteers may choose to carry their own medications, but these are for self-administration ONLY. A 'safe' treatment for most minor injuries - cuts, bruises, stings etc that we can offer is clean cool sterile water. We need to have big bottles of this available.

We now have 10 volunteers trained and qualified in the Certificate for Emergency First Aid at Work. This is valid for three years and will then need refreshing. If you are considering undertaking this extremely valuable training, as either a volunteer or member, please contact me via [secretary@nwdct.org](mailto:secretary@nwdct.org) and I will gather names for the next training for 12 candidates, planned possibly for late summer/early autumn. We already have a list of 5 names. The cost will be approximately £20 per person. *See photo on page 11.*

### **Linking and Networking - (The Nancy Oldfield Trust)**

The Trust has many positive links with similar and relevant organisations, whereby interchange of ideas and sharing of learning can bring many benefits.

Potential links with The Nancy Oldfield Trust (TNOT) were discussed in a fruitful meeting held on 5th March at their base in Neatishead.

Ivan Cane and I met Senior Instructor Charles Hare-Winton and Centre Manager Stephen Bradnock. TNOT have offered to allow NW&DCT volunteers to take up any unfilled places on their regular First Aid training courses for a reasonable cost. Also, TNOT will offer a reduction in the cost of some courses for Trust members and volunteers.

Sue Kírrage - Education & Training Officer



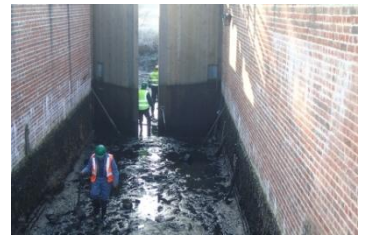
### 5 day work-party:

**Saturday 19th January 2019** Volunteers met at Bacton Wood lock and pumped out all the water, removed all the planks, bricks and other debris that had been thrown in, cleared all dog mess from around lock edges and got the site ready for the Sunday work party.

Tom, the Trust's Fisheries Officer was on hand to keep an eye on the wildlife in the lock. It hadn't been expected to find much, as the lock was last dry in 2017, and is completely landlocked - but NO - over 500 fish fry and some frogs and toads were transferred to the canal below. It's considered that most were probably carried on the legs of the swans that nested on the bund last year. Amazing - and many thanks to the Fisheries Officer and his team for their efforts.



**Sunday 20<sup>th</sup> January** Volunteers met up at the work shop and distributed safety equipment to DofE students and warned them to keep away from lock edges due to the icy conditions. They then cleared all scaffolding, bricks and other metal work from the entrance above the lock and also cut down willow growth in the same area with the help of Sue Kirrage, the Trust's Education Officer keeping an eye on them. Once the lock was pumped dry again the main volunteers erected the scaffolding tower in front of the gates ready for the chain saw man to do his bit on Monday. The steel bands were then cut away from the base of both of the gates so as to allow cutting of the door edges. The gates were then adjusted to get free movement, the gate on the path side was found to be binding in various places. Concrete that had been put down as a 'bodge job' decades previously had to be removed with a Kango drill to get free movement. But on opening the gate fully to the wall it was still fouling, so the bottom of the post was cut off using chain saw. This gave full movement. Scaffolding was moved to centre of lock for overnight security and the site was cleared of anything that could have been thrown in overnight.



Meanwhile, Trust Electrician Darren and the 'electrician's mate', Ivan, worked upgrading Ella's electrics. First, a new plug and socket system was set up to make it easier for the crew to attach and detach the electric motor. Then a new fuse board and ancillary switch board were wired in, with wiring provision for the headlight. Finally, the bilge pump electrics were re-routed with new switch gear.

**Monday 21st January** The lock was pumped out again, scaffolding put back in position and the chain saw man cut the doors so as to get a good fitting face.

Arnie, the chain saw man was in action as Graham Pressman reports:

*Arnie ran his saw down 3 times in the most perfect straight line I have ever seen. It was as though the machine were part of him. A real joy to watch! He bought a special Rip-Saw chain for his saw. He'd never used one before and declared his amazement that it was so easy. At the end of the job, he mopped his brow and declared "Phew! That's the first straight line I have ever cut. It went alright, didn't it?". Yes, it is 3 an absolutely perfect set of dead straight cuts. It will need no further planing. The matching faces go about 1/2 way through the posts.*



**Tuesday 22nd January** The lock was pumped out again. The doors were then closed up together and wedged shut. The angles were measured and wood was cut to make new top nosing boards, special adhesive was applied underneath both boards. These were then drilled right through and bolted down with stainless steel bolts. Strangely, the gate on the path side was found to be fouling the bottom again and lots of time was used up trying to adjust the top strapping to get the door to move freely but to no avail. The thought is that the bottom pivot has lowered down in the original cill therefore lowering the gate. Work ceased at 4pm. Tools cleared away and we went home feeling cold and dejected...



**Wednesday 23<sup>rd</sup> January** The lock was pumped out again and further work undertaken to attempt to enable the gate to swing clearly. *(no photos today!)*

### **Sunday 3<sup>rd</sup> February (Bacton Wood lock)**



The main body of volunteers with the aid of the digger removed the new Bacton Wood lock balance beams from the trailer and positioned them to line up with the appropriate gates. Careful measurements were taken and a card board pattern taken of the square box on the beams and then transposed and marked out on to the tops of the main upright posts. The posts were then sawn down to make exact fit to the beam boxes. The balance beams were then lifted and, with a lot of juggling and minor adjustments with the grinder, fitted to the gates. The angle of the beams had

to set at 3.5 degrees. They would have to be drilled and securely bolted to the centre upright beams on gates on the next work party. The gate on Laurie's side is now working perfectly using the beam, but the path side one is still not clearing the bottom of the lock chamber, so it looks like we will have to lift the gate and inspect and shim up later on. Work finished about 4pm.

### **Sunday 3<sup>rd</sup> February (Purdy's Marsh)**

Work started with just the WPL and two DoE returnees, but did increase with arrival after induction of the new intake together with their teacher, and also two more Trust volunteers, with a third replacing one at lunchtime.

A central site for a fire was chosen adjacent to the backsoke on the southern edge of the site. A combination of hand tools, pole hedge trimmer and brush cutters led to a good area being cut across the site. Most of this area was also then given a cut with the brush mower, which made a reasonably close cut.

Part of the area was raked after this cut, forming windrows of the cut material, which was then placed on the fire.

A large area remains to be raked up; this will give a spread of work of both cutting and raking from the start of the next work party on this site, also allowing everyone with cutting tools to spread out.



### **Sunday 17<sup>th</sup> February**

The balance beams on the lock gates were set at the correct angle of 3.5 degrees and the hole positions were marked for drilling. With the aid of the digger Laurie lifted the beams of the gates. We then drilled out the gate uprights using different diameter drills and screwed the large threaded bolts in to make it easier when the beams are put on. The beams were then lifted and lowered back on to the gates and the new threaded bolts were screwed up tight. Jonathan then dropped the socket into the canal but luckily Laurie had a large magnet and after a bit of fishing it was retrieved.

*Continued...*

Meanwhile, the main party and the 6 DoEers had walked up to Purdy's Marsh. Two other DoE starters undertook their induction at Spa Common - then had their first job – finding and then carrying a long scaffold pole up to Royston Spillway, in preparation for Thursday's WP. They then joined Alan's group.

The volunteers working on Purdy's Marsh continued the three yearly cycle of cutting the reeds. A fire was established on the same site as the previous work party and raking and burning of the cut reeds took place. It was noted that the brush cutters cut easier than the pole trimmer, which tended to ride up on the previous cut.

As a follow up, the brush mower then cut areas as cleared, but not as much of the material cut by the mower was collected for the fire as Alan would have liked. The DoE volunteers kept the fire fed with material as well as cutting and raking.

Volunteer numbers were boosted in numbers by lunchtime by the completion of the planned work to the lower lock gates.

A single line has now been established across the marsh to advance northwards on a wide base next time. An advance cut hole in the centre of the line will allow a new fire site to be started on the edge of the line, after using the brush mower and raking clear the area to prevent the spread of the fire.



### Sunday 3<sup>rd</sup> March



A new fire site was set up just in advance of the general cut line, and mowed before the fire was started. Work continued with the help of the DoE volunteers to cut and collect all the cut long reeds and then burn them on the fire. Saplings were dug out complete with roots from corner close to where back soke runs under canal. Re-growth on a couple of stumps was also cut, but a bow-saw was needed to complete the removal of larger stems. By lunchtime volunteers were down to Terry and Alan, so after lunch they completed mowing of saplings site, and finished with a rough straight line

first cut across the site, which is now in advance of the current fire site. They waited for the fire to die down and then returned to Spa Common to join remaining volunteers who were working in the new unit.

Despite the many jibes from the returning, sodden, DoEers, those at the unit were not working inside, except Darren who was stripping the electrics.

As Laurie had made the articulated boom available, Jonathan was able to tackle the years of ivy growth from the gable end of the unit. Frank and Ivan were tasked with removing the debris and starting a fire, that could never match the Purdy's one, to dispose of the ivy and associated wall parts that came away with it. The ground area on the canal frontage was also cleared of growth, barbed wire and other junk. After lunch, the west side of the unit was cleared of the previous tenant's detritus and sorted into recyclable, tip and burning. Meanwhile Darren, completed the stripping, made three sockets available for temporary use and ensured that the toilet block power was maintained. An urgent job will be the replacement of the consumer unit.

### Sunday 17<sup>th</sup> March



*Steve, Barry and Frank enjoying a smoke at Purdy's Marsh*

At Purdy's Marsh, no new area was cut apart from some tidying of the existing line of cut, and also north along the foot of the canal bank. The remainder of the area was given a cut by brush mower (the area which was not mown last time), bringing whole area to same level of cut. Raking was carried out and all material was transferred to the fire site and burned. A surprising amount of material was removed and burnt; the strong wind meant it all was burning well, although a lot of smoke was also generated as much of it was damp. Various stump regrowth and other saplings were removed from the area, particularly close to the backsoke.



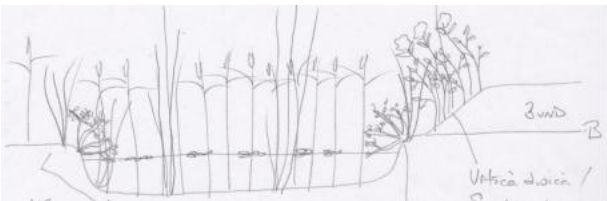
Meanwhile the work party of two, Darren and Ivan, worked on the electrics at the new unit. A new consumer unit was installed and 4 temporary double sockets connected. This enabled lights to be placed in the old spray room and in the main workshop ready for the Mitigation Group meeting on Monday. The last light was installed by Ivan on Monday morning (but he assures us that he didn't sleep there overnight).

During the week, Laurie had discovered that there was no external cladding to the internal wall, so the wall had been stripped ready for new stanchions, gutter renewal and the bottom gutter to be concreted during the coming week.

### Sunday 31<sup>st</sup> March

Following on from a meeting with the Norfolk Wildlife Trust, looking at ways of improving the management of Purdy's Marsh and increasing the bio-diversity of the area, we are experimenting with two turf ponds.

These are shallow ponds which, being lower than the surrounding marsh, will hold water for some part of the year. At the same time, the removed spoil becomes a drier bund beside the pond. These will be then left for the four year cycle, when the time will come around to clear them. During this time, the Trust's Wildlife team will monitor the progress.



*This Broad's Authority sketch gives an idea of the cross section.*

DoE volunteers started setting out the edge of the smaller pond while Chris H started with his digger to dig out the larger pond following the guidelines we had received from the Norfolk Wildlife Trust. The larger pond soon had some water in it, not as much as we would like but give it time!

Using the digger, it was not long before we had a pond of the size we were trying to achieve and the smaller, hand dug, one was progressing well. Chris H moved on to use the digger to scrape a test area near the bank clearing the nutrient rich top layer to improve the marsh.



*Chris helped some of the volunteers to gain experience of using the digger and the first photo shows Ivan concentrating hard. Photo2 shows DoE volunteers standing behind the pond they had created shortly before they finished for the morning. Chris took the 3<sup>rd</sup> photo a few days later.*



*See Suki's item on page 9 detailing the future management of Purdy's Marsh.*

## *Mid-week work-party news*

### **Thursday 24<sup>th</sup> January 2019.**

The remaining notice boards, posts, tools and wheelbarrow were collected from Spa Common and transported to Paston Way. Notice Board installed, the work party moved on to Royston Bridge. Preliminary post holes were dug but WPL had forgotten a power drill so we were unable to complete installation. We should be able to do the final Notice board and the Display boards next time.

The Paston Way board is the third sponsored board to be erected, and our thanks to Tow Webster for agreeing to keep the content up to date.

### **Thursday 21<sup>st</sup> February**

The team continued with the final session of the erection of the display panels (kindly donated by Stephen Parke of Shrewsbury, and designed and manufactured by Chris Heath).

Chris H and Jonathan travelled to Ebridge to pick up 10 half bags of ballast whilst Frank and Mark dug a post hole at Briggate. After Chris delivered the ballast, we cemented the display panel in place.

Chris travelled to Swafield to start digging the second hole while we followed on to install the display panel. The group then travelled to Royston Spillway.

The Spillway display panel was installed and a removable scaffold barrier erected.

### **Thursday 21<sup>st</sup> March**

The work-party continued the attack on the detritus in the unit. The remaining redundant light fittings were removed from the Spray Booth.

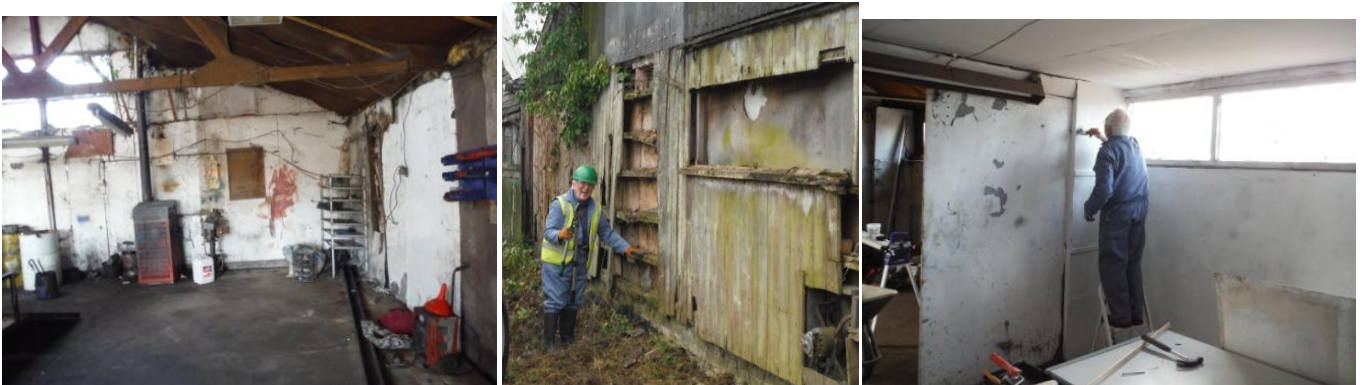
All walls, except the Canal side, have been patched by Frank and Jonathan with a first coat of white emulsion applied to see how it looks.

General rubbish including a bed head, car roof rack and bench seat, were removed from the spray booth ceiling and there are still some off-cuts of wall sheeting to be removed from the middle section. To do this it may be necessary to remove another wall panel from the main workshop.

The roof section over the spray booth entrance doors is now available for light storage and the rear section could also be used once the roof's internal ceiling panel is re-supported. I do not believe anyone should attempt to get into the roof- space as it is rather insubstantial but may be OK with a crawling board.

**With thanks to the work- party leaders who contributed the reports above:**

*Chris Black, Terry Willoughby, Mark Shopland, Alan Bertram*



*The ever-cheerful Frank working hard at the Unit*



### Management of Purdy's Marsh Reviewed

This March, Ivan Cane, Alan Bertram, Mark Shopland, and I met Sam Brown (Conservation Officer with the Norfolk Wildlife Trust) at Purdy's Marsh to review its management. Now owned by The Old Canal Company, The Marsh is a County Wildlife Site and part of the larger Spa Common CWS. It is an area of former fen meadow (1.33 ha excluding the Canal and embankments) which had previously lacked management for years. Without reed cutting or grazing, it had been accumulating organic matter, and this had led to the site getting dryer, more nutrient-rich, and dominated by competitive plants like Common Reed, Hogweed, Creeping Thistle, Nettle, Bramble, and Willow.



Alan, Suki, Mark, Sam  
Photo by Ivan

**Recent Management** The Canal Trust has managed the site since the winter of 2016/17, and since 2018 they have been following guidelines provided by the NWT. The main work has been to cut-and-collect the marsh vegetation on a 3-year rotation in an attempt to control the more dominant plants present, and give a wider range of species the chance to grow. Self-sown scrub/trees are also removed, and Himalayan Balsam controlled as much as manpower allows. However, Work Party Leader Alan feels that the recommended cutting regime has – if anything – *increased* the amount of coarse agricultural-weed type species present (like Creeping Thistle, Nettle and Bramble) without noticeably encouraging more attractive/less competitive plants. It's also very hard, rather uninspiring work for the volunteers involved.

**Recommendations** Species-poor reed beds do have their own value – for example as homes for invertebrates and small mammals, and as hunting grounds for Barn Owls. So even if the NW&DCT did very little with Purdy's, the Marsh would still be a reasonably worthwhile site environmentally. However, if more *can* be done cost-effectively to improve its biodiversity, we want to do it! So after walking the site, and discussing the options, we settled on several low-key recommendations to follow:

- in order to help keep up the morale of work party volunteers, investigate using appropriate **contractor(s)** to do the bulk of the cut-and-collect work
- cut only a **quarter** of the site/year
- **rake off** as much smothering litter as possible after any cut
- dig a few '**turf ponds**'/'**mini-scrapes**' (a sort of localised turf-stripping), in order to create some topographical diversity in the Marsh
- aim for creating reasonable **physical variety** along the **back soke** by creating open bank areas (cut and rake off), and also keeping some areas with scrub/tree shade
- aim to just **keep on top of**, rather than eradicate, **Himalayan Balsam**.

***Thanks to Alan and Mark and their heroic volunteers for the hard work they've put into the site to date***

Suki Pryce – Wildlife Officer

### Fleet news

It's been the winter season and we have been available to carry passengers all winter. Huge thanks to Tom Carr in particular who has crewed most Sundays with me. Also thanks to the crew members who have covered for us as necessary.

Ella II has worked hard all year and has advanced, with experience in a number of ways. The most significant of these is the addition of Solar Panels to keep the batteries charged. She had to be moved to Ebridge for the winter, because we were too much in the shade at Spa Common, between trees and workshops. That worked very well. The difference is dramatic. As a result, I have not had to carry batteries home to charge once, all winter.

I am looking forward to the work party sprucing up the paintwork soon, ready for summer. Ella II will look a treat when that's done. I also have a plan to improve the mounting of the clear panels on the sides of the passenger area. Even in summer, that helps protect people from the heat of direct sunlight as well as protecting passengers from the cold in the winter. *If there is a volunteer out there who will cut to size lengths of wood for me and fit them to the steel uprights supporting the solar panel top, sandwiching in the clear plastic to hold it in place tight and secure against damage from high winds, I would be forever grateful.*

Then again, this is all about boats, not just trip boats. We now have a weed management boat of our own. It could cut right to the bottom, although we always leave about 6" to a foot of plant on the canal bed, thus it is management, not just hacking it all out. Balancing ecological needs with the needs of navigation is the key to aquatic plant control. This way maintain wildlife habitat, shade and spawning grounds for the fish at the same time as retaining a good channel for boating of all kinds, from models through canoeing to passenger boating. My intention is to do an early, deep-ish trim about now, just before the pike spawn and then, as they can hatch and develop a bit before the need comes to do regular work to control growth, later on. Tom, Fisheries Officer has provided me with a fish spawning calendar, so that I can work around all the different species we have. Nesting birds too have to be cared for and taken into account.



Another point, well worth a mention is that we use the pontoon *Sue B* when and if the work- parties need materials or people moved. The boating team is always available for that. Let's face it, why wheel a barrow ¼ or ½ a mile when several can be moved at once on a boat with almost no effort and very little fuel.

Finally, boat crew volunteer numbers are slowly going up overall.

Graham Pressman – Boating Officer

For Trust fleet enquiries Email: [boating@nwdct.org](mailto:boating@nwdct.org) or for trip boat bookings 07585 160 772

Alex Hurrel – Media Officer

### Canal trust gets the sack - 500 times!



A delivery of 500 hessian sacks – enough to keep Santa happy for several decades - is helping maintain part of the Canal. Once filled with earth, the bags are used to bolster the banks. They were paid for with a £500 donation to the Trust from the **Worstead Festival**. Trust chairman Ivan Cane said they were grateful for the grant and added “Bank maintenance on any canal is essential and these bags are being used to build up the sides of the banks above Ebridge Lock, which then provide ‘walls’ for an infill of de-silted material from the canal. This, in turn, prevents the canal overtopping in times of heavy rain, enabling walkers and others to keep drier feet when rambling along the canal-sidewalks.” *The photo shows Ivan Cane, Chair Fisheries Officer Tom Webster beside the canal at Ebridge. Some of the filled hessian bags can be seen in use behind them.*

Alex Hurrel – Media Officer

### **Big Society Grant**

Further to the item and pictures in the last Quagmire, the Compact Tractor, Loader and Mower have been purchased and will only be delivered when we have arranged secure storage for them at Spa Common. A training course is then to be provided by the supplier in the safe operation and use of all three items.



To provide safe storage and maintenance facilities for this equipment we have taken on the lease of a small industrial unit at Spa Common (*see photos in work-party news above*). The plan is to move all the equipment in to it and perform any necessary maintenance. Whilst we already know they are all functional, some remedial work in their appearance may help in subsequent publicity.

With the purchase of the Aquatic Plant Cutter referred to in the Boating Officer's item above, together with the Compact Tractor and its accessories, we have fully spent our grant of £14,980

Mark Shopland – Grants Officer

Julie Kelleher – ICT Officer

### **The power of Social Media!**

Early on Monday 18<sup>th</sup> February the Canal Trust received a private message to our Facebook page. A young lady had mislaid her Canon DSLR camera whilst visiting Honing lock on the previous Saturday and the Trust were asked to put out an appeal asking if anyone had found it.

Immediately we posted to our Facebook account about the loss and very shortly afterward a gentleman confirmed in another Private Message that he had found a camera and that it could be the camera as reported missing.

We took details of his find along with his personal details and I then liaised between the two.

Great news, it was the missing camera. The lady contacted the gentleman and they arranged to meet.

We are glad to have played a part in reuniting the camera with its owner.

The power of social media heh? Camera Lost - Camera Found - Camera Reunited with owner all within a few hours.

We have buttons to our various social media accounts to the bottom of the North Walsham and Dilham Canal Trust website homepage – [www.nwdct.org](http://www.nwdct.org)

Julie Kelleher – ICT Officer

--oOo--



Volunteers at the First Aid Course mentioned on page 3



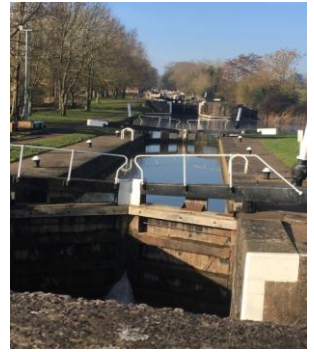
### **Restoration Hub Workshop**

Held at Hatton Locks Inland Waterways Offices on Feb 15th 2019.

Up at 5am and setting off at 6 to drive to a training course a four drive away, near Birmingham, I was hopeful that it would be useful. It was nastily foggy and frosty, (and the A14 is no-one's favourite route) but I arrived to a most beautiful sunny day. The Locks looked stunning for those who've never seen them - a fitting location for the Inland Waterways main offices. I never did ask how many locks there are? They went as far into the distance as my eyes could see. I know some of you will be itching now to tell me all about this flight .....



There were essentially two presentations with opportunities for discussions with representatives from a number of Trusts. Some were adamant and very vocal that they did not wish to work with young people and the safeguarding requirements were too onerous. Others fully embraced the need to engage younger people. The most challenging group to engage appears to be the 30something kind of age group. Some of the participants who attended that I met came from Welshpool, Montgomery, Sanky, Stafford, Hereford, Cotswold, Somerset, Derby and others that I didn't catch. About two dozen people attended.



The two presentations were:

1. Engaging young people in volunteering
2. Family camps

Some ideas that I listed from some very positive participants and the presenters included:

- bringing in groups from a variety of residential care settings, including the learning disabled (note this also brings along their carers, who may be interested in volunteering...)
- liaising with local schools and colleges in person, not by 'flyers' or letters
- liaise alternative education organisations - home education and PRUs etc
- a young person rep or two on the committee - viewed as essential
- more 'bite-size' 'come and try' 'one-off' volunteering opportunities
- young people great at social media - try to get one of them to help develop that for us
- liaise Prince's Trust - who need short-term projects

When I approach any educational or care organisations, they will certainly ask what procedures we follow for Health and Safety, etc. The Restoration Hub officers at the course told us they aim to produce some materials later in the year that will supplement our own policies and help us.

We will soon have an **Induction Procedure and Handbook** in place for the Trust. Work on this over several weeks has led to a plan to produce an Induction Handbook that will help guide the Induction of all new volunteers.

Over time each Team - whether Boating, Fishing, Support, Wildlife or Work Parties will then develop their own additional induction procedures for their particular specialist field.

Volunteer recruitment is really important for the Trust to continue to grow and develop. Now that we are an Incorporated Charitable Organisation our procedures are even more open to scrutiny.

If you know of any organisations looking to bring people to our lovely canal for educational activities, please contact me on 07770 661784 or contact [secretary@nwdct.org](mailto:secretary@nwdct.org) if you know anyone who would be interested in Volunteering?

*Sue Kirrage – Education & Training Officer*

### Some unexpected spring delights along the canal

I began plant-surveying along the Canal last autumn 2018, and that yielded a great haul of interesting plants. But I hadn't yet seen what spring and summer have to offer, so began my 2019 surveying on 20<sup>th</sup> March 2019. Again, the Canal surprised me with some desirable, attractive, unusual, and rare plants.



**Primroses *Primula vulgaris*:** there's a single patch clinging on to survival in the dense soke-side vegetation near the sluice NW of Royston Bridge. This is a good case for some TLC and selective management to keep this area free of tall growth in order to favour the Primroses. There's also another, less threatened patch (as the enclosing vegetation is less uncontrolled), on the west bank of the Canal south of Royston Bridge.

I cleared swamping vegetation away to take this picture, but these Primroses need to have this cleared regularly if they're to survive



**Anemone blanda:** yet another 'Well I never!', 'Go figure!', 'Why on earth is it here and how did it get here?' species. Just two plants, on the shoulder of the Canal near the Primroses.

Absolutely unexpected *Anemone blanda* by the Canal near Royston Bridge



**Annual Wall-rocket *Diplotaxis muralis*:** a delightful and not-common plant, with flowers of a lovely clear, strong yellow. There are just a couple of plants on the soke bank across the Canal north of the above-mentioned sluice.

Unusual and attractive Annual wall-rocket on a back-soke bank near Royston Bridge



**Common Stork's-bill *Erodium cicutarium*:** not rare in our area, but not common along the Canal, its pretty pink flowers and cut foliage are a welcome sight.

Pretty Common Stork's-bill isn't rare generally, but is uncommon along the Canal



**Great Lesser Celandine *Ficaria verna ssp. chrysocephalus*:** dotted along the water line near the sluice and further north, this looks like a Marsh Marigold *Caltha palustris* crossed with a Lesser Celandine, or like an outsized Lesser Celandine. We think it's the subspecies 'chrysocephalus'.

Great Lesser Celandine looks like an outsized Lesser Celandine

## Items of interest to members:

### New Interactive Map.

#### Waterway Routes

Maps and DVDs for the Waterways of Britain – The Newest and Best

MAPs DVDs Routes Photos FAQ Blog & More ...

SEARCH RESULTS FOR: NORTH WALSHAM

#### North Walsham & Dilham Canal

Posted on 29-01-2019 by Paul — No Comments |



The North Walsham & Dilham Canal was opened in 1826 and ran from Antingham to join the River Ant at Smallburgh. Restoration has started with proposals to restore the rest of the route. I have added North Walsham & Dilham [Continue reading →](#)

After a couple of years negotiating, waterwaysroutes.co.uk has produced a **downloadable, printable map** of the Canal FREE. If you additionally install Memory-Map to your device, you can also download a "seamless mapping to scroll along the route, with real-time tracking on GPS enabled devices". This professionally available free product sits nicely with the Trust's own "Access Map", of which an up-dated edition is soon to be printed. For the map, and instructions on how to download, go to <http://www.waterwayroutes.co.uk> and select the waterways restoration maps section.

--oOo--

Taken from a Book... (or, in this case, a report

*Ivan Cane – Trust Archivist*

Recently, I was lucky enough to be given a copy of Joseph Priestley's "Historical Account of the Navigable Rivers, Canals and Railways of Great Britain" 1831, by a good friend. This is probably the first national record of our Canal, being just five years after it was opened. Shown here is the entry for the North Walsham and Dilham Canal:

Of interest is the length, quoted at 7 miles rather than 8.75, and the Halls and Parks that are listed on its course. The final paragraph is worthy of today's marketeers.

*Ivan Cane – Trust Archivist*

#### NORTH WALSHAM AND DILHAM CANAL.

32 George III. Cap. 69, Royal Assent 5th May, 1812.

THE North Walsham and Dilham commences at Wayford Bridge in the parish of Dilham in Norfolk, where it communicates with the River Ant; from this place it runs in a north-west direction, parallel to a branch of the Ant River, by a very sinuous course, passing Worsted, Westwick, Honing and Corstwick Halls, leaving North Walsham and Suffield Hall on the west, and proceeding by Witton Park to its termination at Antingham, being a distance of seven miles. The act for forming it was obtained in 1812, under the title of 'An Act for making a navigable Canal from the Rivers Ant and Bure, at or near Wayford Bridge, near Dilham, to the towns of North Walsham and Antingham, in the county of Norfolk.' The proprietors are incorporated as "The Company of Proprietors of the North Walsham and Dilham Canal Navigation," and have power to raise £30,000, in shares of £50 each; and in case this should be insufficient, they may obtain £10,000 in addition, by contributing amongst themselves, or by mortgaging the rates and dues. They may also demand the following

#### TONNAGE RATES.

For all Lime-stone, Dung, Peat or Soap Ashes, Chalk, Marl, Clay, Sand and all Lime or other Articles used as Manure or for repairing Roads.....	2½	d.	per Ton, per Mile.
For all Coals, Culm, Pig-iron, Iron-stone, Iron, Copper and Lead-ores, Lime not for Manure, Kelp, Ashes, Barilla, Tallow, Building-stone, Bricks, Tiles, Paving-stone and Pipe-clay.....	3	ditto.	ditto.
For all Coke, Cinders, Charcoal, Corn and other Grain, Flour, Malt, Meal, Cider, Hay, Straw, Raw Hemp and Tanners' Bark, Porter and Beer, Timber, Ochre, Calamine, Bar-iron, Lead, Kelp, Sand except for Manure, Pitch, Tar, Turpentine and Rosin.....	4	ditto.	ditto.
For all Wines and Spirituous Liquors.....	5	ditto.	ditto.
For all Passengers in Boats or Barges.....	1	per Mile each.	
For all Cattle, Horses and Asses.....	½	ditto.	ditto.
For all Sheep, Swine and other Beasts.....	6	ditto, per Score.	
For all other Goods, Wares, Merchandize and Commodities.....	6	per Ton, per Mile.	

No less Fraction than Half a Mile or a Quarter of a Ton to be paid, and Wharfrage to be charged if Goods remain longer than Forty-eight Hours.

Lords of manors and occupiers of land may erect wharfs and quays, but if they refuse, the company have power to do so, charging rates according to their own discretion.

This work is highly beneficial to the district through which it passes, by affording a communication with Great Yarmouth and London, and thus connecting with most parts of the kingdom.



## Dates for your diary

**Wednesday 12<sup>th</sup> June 2019 Film Evening at The Atrium.**

Jonno has produced another film showing the on-going restoration of the Canal. The film starts from the **BBC coverage of the test re-watering** in January last year and goes on to show **five years of restoration along the dry section**. Other highlights include a **canoe trip along the re watered length**, the **restoration and launch of Ella II** (in the pouring rain!) and a short section entitled "**Canal Newsreel**" incorporating odds and ends shot during the last year.

*Unfortunately, bad weather interfered with our plans for the last film night so we are hoping to fill the theatre again this time. After the film, there will be a raffle for **good quality prizes** and the ever popular **home-made cakes** as well as photos, displays, Canal merchandise, and an opportunity to ask questions and discuss the restoration with Trustees, Officers and volunteers.*

**Trust members are free**, non-members £4 each.

The Atrium, Spenser Avenue, North Walsham NR28 9HZ. Doors open at 6.30, films start at 7pm.

**Saturday 13<sup>th</sup> and Sunday 14<sup>th</sup> July Canal Open Weekend.**

Despite torrential rain last year the event was well attended and everyone enjoyed themselves. Final details of what to expect will be published in the July issue of Quagmire. We suggest that you come hungry, as there will be various food and drinks for sale, which can be enjoyed sitting beside the Canal in the sunshine!

Last year was the first 'Members and Volunteers' evening which was a chance for people to catch up or get to know other Canal supporters. **Top and Bottom Gates Trophies** will be awarded again - one for a person who went above and beyond the call of duty during the year (won last year by Jonathan who completely refurbished the old toilet) and the other for someone who did something amusing or silly (won last year by Ivan for throwing his good saw into the fire instead of the pile of brash.)

Nominations please to [Secretary@nwdct.org](mailto:Secretary@nwdct.org)

**Saturday 27<sup>th</sup> July Norfolk Day.**



Last year the Canal Trust joined the celebration of "Norfolk Day" by giving people the opportunity to cruise along the North Walsham & Dilham Canal. This enabled trippers to boat part of this heritage industrial gem of North Norfolk, and Norfolk's only sailing canal with locks, that is under restoration at the moment. The cruises encompass a mile of restored waterway from Ebridge Mill to Spa Common, passing under one of the original, and listed, canal bridges, disembarking to inspect the restored Bacton Wood Lock, and learn how it will work, followed by a return cruise enjoying the abundant wildlife from the quietness of the boat.

The trips were very well received and over-subscribed and they will be running again this year. The heritage trips will start from Ebridge at 10 a.m., 12 noon, 2p.m. and 4 p.m. £7.50 per person.

**To book phone Graham on 07585 160 772**

*All monies raised will help with further restoration of our fabulous secret canal  
in the heart of North Norfolk*



For the Heritage Open days this September the Trust have once again arranged for access to the two Swafield Locks on the North Walsham and Dilham Canal. These two locks were last used in 1893 and officially abandoned in the early 20th Century. However, there still are substantial remains, and one can access into the Upper Lock, that once joined the Canal to Swafield Millpond. The two locks lie on private land, but the Trust have organised with the owners that a Canal Walk will start from Swafield Locks - with parking provided on their land.



*Photo shows abandoned Lock No. 5 at Swafield*

Following an inspection of the locks, a guided walk will take place down the Canal, starting with the listed skewed Swafield Bridge, passing the remains of the Norfolk and Suffolk Joint Committee Railway Bridge, now Paston Way, and then having an opportunity to spot wildlife as we pass the NWT reserve at Pigney's Wood. At Royston Bridge, the history of the Wherry Inn, the bridge and its canal connections will be considered, followed by wildlife spotting again at Purdy's Marsh, with the chance of inspecting the rebuilt Royston Spillway, and to learn about how the Canal collected and maintained its water supply.

At Bacton Wood the restored Lock will be explored and participants can learn how it is operated. Here, also was the "Port" or staithe for North Walsham, with its original bridge and evidence of WW2 Defence Line No 1 fortifications. (There will be the chance to continue one's journey to Ebridge by trip boat Ella II – the fare from Spa Common to Ebridge is £3.) Ebridge Millpond will be the final destination for the 3 mile walk, and after examining the on-going restoration work for the lock, the rebuilt spillway and refurbished mill, ferrying arrangements will be made to return drivers to their cars at Swafield. An e-booklet is also available, giving the historic background and pictures for the walkers.

The walks will begin at 10.30 each day with expected arrival at Ebridge by 2 p.m.

**Booking is essential. Telephone Ivan on 01328 862435 to book a place.**

There is **no charge** for the guided walk but donations to the Trust are always welcome!

The leaders will be Roger Hopkinson, one of the founder members of the North Walsham & Dilham Canal Trust and Ivan Cane, archivist for the Canal's records and Trust Chair.

**Parking** in the field on the left, just past Starling's Haulage Yard at NR28 0RH, Bradfield Road Swafield

### **Talks & Presentations 2019**

Wednesday 17<sup>th</sup> April

Hickling Ladies Group

David Revill

Wednesday 12<sup>th</sup> June

The Postcard Club

Ivan Cane

*The Quagmire is a newsletter for all members of NW&DCT and members are encouraged to make suggestions for future items.*

*The deadline for items for inclusion in the Summer2019 Quagmire (at the Trustees' discretion) is 7<sup>th</sup> July 2019. Contact [mdablack@btinternet.com](mailto:mdablack@btinternet.com)*